

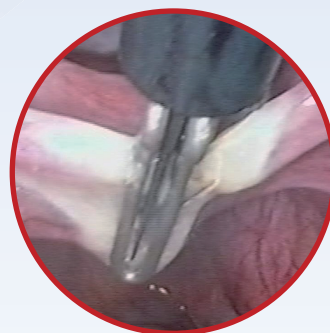


Innovation in Gynaecology



LiNA PowerBlade™

Single use multifunctional forceps for bipolar coagulation and cutting



LiNA bipolar cables available for below ESU generators:



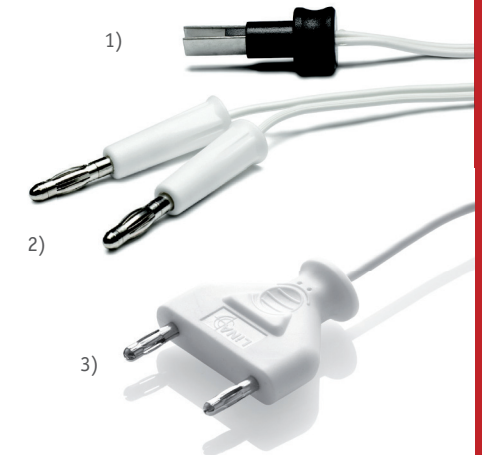
REF 360150L for Valleylab



REF 360131L for Erbe, Select, Storz



REF 360139L for Martin, Berchthold, Aesculap, Wolf



Available with three different connectors:

- 1) European bipolar male connector
- 2) 2 x 4mm male connector (banana plug)
- 3) 2 x 4mm bipolar male connector with fixed 29mm distance

Ordering information:

LiNA PowerBlade 0459

REF.	LiNA PowerBlade - Single use only - Single packed - Sterile	Packing
5005-E	5mm(diam) - 330mm long - with 25cm cable and European bipolar male connector	Box of 5
5005-E-160	5mm(diam) - 160mm long - with 25cm cable and European bipolar male connector	Box of 5
5005-E-420	5mm(diam) - 420mm long - with 25cm cable and European bipolar male connector	Box of 5
5010-E	10mm(diam) - 330mm long - with 25cm cable and European bipolar male connector	Box of 5
5010-E-160	10mm(diam) - 160mm long - with 3m cable and European bipolar male connector	Box of 5
5005-E-C	5mm(diam)curved jaws - 330mm long - with 25cm cable and European bipolar male connector	Box of 5
5005-E-C-160	5mm(diam)curved jaws - 160mm long - with 25cm cable and European bipolar male connector	Box of 5
5005-E-C-420	5mm(diam)curved jaws - 420mm long - with 25cm cable and European bipolar male connector	Box of 5
5005	5mm(diam) - 330mm long - with 3m cable and 2 x 4mm bipolar male connector	Box of 5
5005-160	5mm(diam) - 160mm long - with 3m cable and 2 x 4mm bipolar male connector	Box of 5
5005-420	5mm(diam) - 420mm long - with 3m cable and 2 x 4mm bipolar male connector	Box of 5
5010	10mm(diam) - 330mm long - with 3m cable and 2 x 4mm bipolar male connector	Box of 5
5010-160	10mm(diam) - 160mm long - with 3m cable and 2 x 4mm bipolar male connector	Box of 5
5005-C	5mm(diam)curved jaws - 330mm long - with 3m cable and 2 x 4mm bipolar male connector	Box of 5
5005-C-160	5mm(diam)curved jaws - 160mm long - with 3m cable and 2 x 4mm bipolar male connector	Box of 5
5005-C-420	5mm(diam)curved jaws - 420mm long - with 3m cable and 2 x 4mm bipolar male connector	Box of 5
5005-Y	5mm(diam) - 330mm long - with 3m cable and 2 x 4 mm bipolar male connector with 29mm fixed distance	Box of 5
5005-Y-160	5mm(diam) - 160mm long - with 3m cable and 2 x 4 mm bipolar male connector with 29mm fixed distance	Box of 5
5005-Y-420	5mm(diam) - 420mm long - with 3m cable and 2 x 4 mm bipolar male connector with 29mm fixed distance	Box of 5
5005-Y-C	5mm(diam)curved jaws - 330mm long - with 3m cable and 2 x 4 mm bipolar male connector with 29mm fixed distance	Box of 5
5005-Y-C-160	5mm(diam)curved jaws - 160mm long - with 3m cable and 2 x 4 mm bipolar male connector with 29mm fixed distance	Box of 5
5005-Y-C-420	5mm(diam)curved jaws - 420mm long - with 3m cable and 2 x 4 mm bipolar male connector with 29mm fixed distance	Box of 5
5010-Y	10mm(diam) - 330mm long - with 3m cable and 2 x 4 mm bipolar male connector with 29mm fixed distance	Box of 5
5010-Y-160	10mm(diam) - 160mm long - with 3m cable and 2 x 4 mm bipolar male connector with 29mm fixed distance	Box of 5

LiNA Medical ApS

• Formervangen 5
DK-2600 Glostrup
Denmark

• Tel.: +45 43 29 66 66
Fax: +45 43 29 66 99
info@lina-medical.com

• www.lina-medical.com
CVR: 10054974



LiNA PowerBlade™



functional

A clean and precise cut

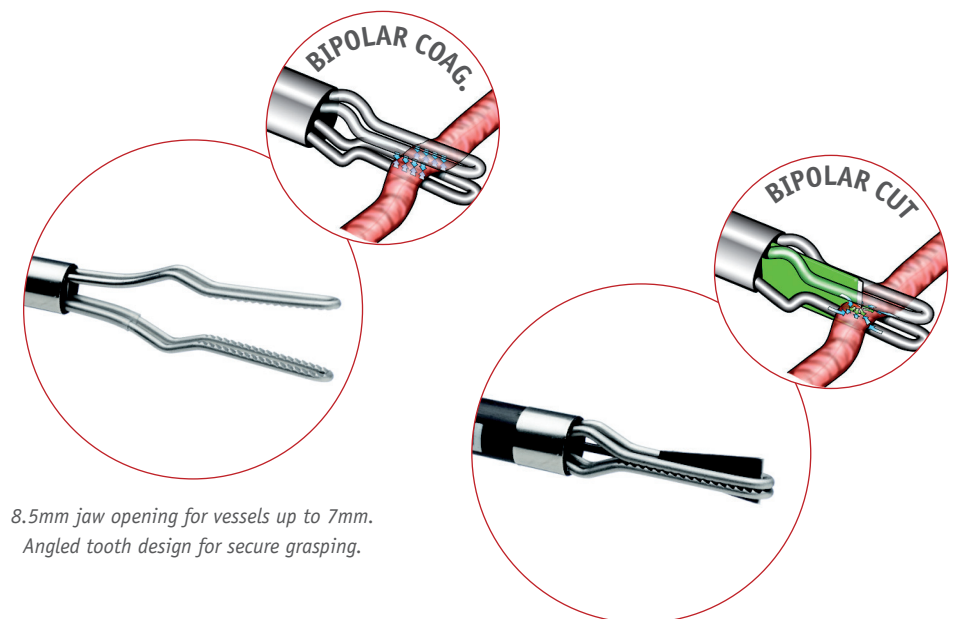
- **The bipolar electrode/blade never goes dull**
The patented design allows for bipolar transection of the tissue. Cutting is achieved through bipolar energy, **not mechanical** action of a knife blade
- **For use with all standard bipolar electrosurgical units**
- **Broad range of size, length and jaw geometry**



5mm and 10mm - Straight jaws



5mm - Curved jaws



8.5mm jaw opening for vessels up to 7mm.
Angled tooth design for secure grasping.

Cutting electrode/blade for bipolar cut.

versatile

LiNA PowerBlade can be used together with all standard bipolar electrosurgical units. No capital equipment investment is required to use the LiNA PowerBlade

- **Wide range of functions**
LiNA PowerBlade is a bipolar coagulating and cutting forceps for improved techniques in laparoscopic procedures. As an all in one instrument, the LiNA PowerBlade is ideal for many complex and time consuming procedures
- **Grasping**
- **Dissecting**
- **Coagulating**
- **Cutting**

safe

Unique bipolar *power blade* cutting function

- Advancing the cutting electrode for transection, the bipolar current is automatically switched from the jaws
- Electrosurgical current passes through the tissue between the cutting electrode/blade and the jaws
- Bipolar electrosurgical cut with coagulation along surface of cutting electrode/blade ensures a reduction in bleeding compared to a conventional knife blade instrument