

RaVoR™ bipolar electrodes single-use

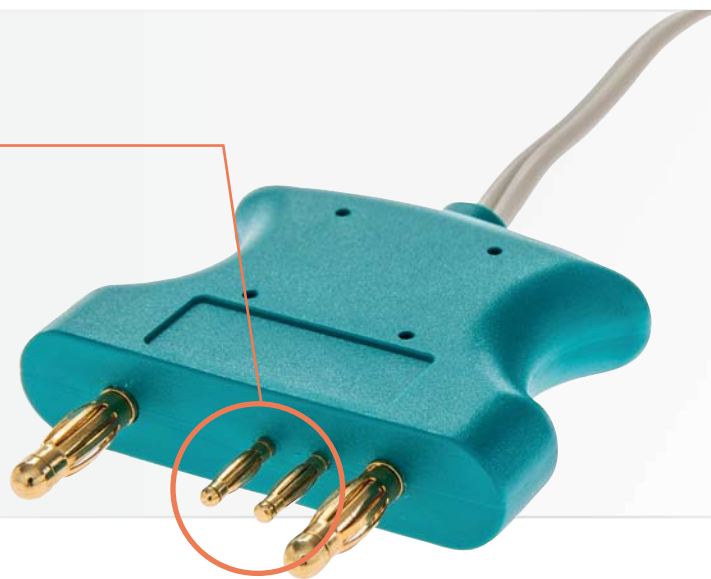


“The RaVoR™ bipolar electrodes single-use for the reduction of the inferior turbinates are a convenient solution for my private practice. My staff and I enjoy the ease of use due to the new plug and operate feature.”

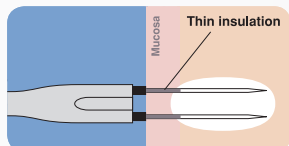
S. Grupp, MD, Freiburg (Germany)

Plug and operate

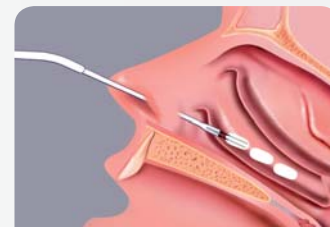
- Convenient handling for surgeon and staff
- Perfect match with the CURIS® 4MHz radiofrequency generator
- Auto recognition of the instrument and instant selection of the RaVoR™ program
- CURIS® – Precision thanks to AutoRF™



RaVoR™ of the inferior turbinates



70 44 62
RaVoR™ bipolar electrode
 for the inferior turbinates, single-use
 working length: 103 mm

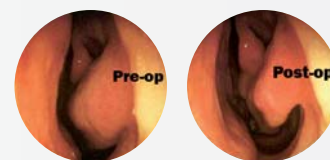


Schematic view of the **puncture sites** for the application of radiofrequency energy of the hypertrophic turbinates.



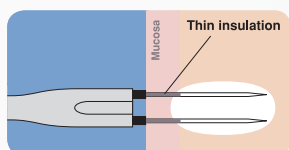
“RaVoR™ is a modern surgical technique showing good and long-lasting treatment results when used to reduce the volume of hypertrophic turbinates. At the same time it preserves the mucosa and its function.”

R. Romeo, MD, Israelitic Hospital
 Rome (Italy)



Inferior turbinate – Preoperative condition and six months postoperatively with significantly enlarged nasal passage.

RaVoR™ of the soft palate



70 44 95
RaVoR™ bipolar electrodes
 for the soft palate, single-use
 working length: 110 mm



“The radiofrequency assisted soft palate procedure is a minimally invasive, safe and quick procedure. It is well tolerated by patients. We have not observed any bleeding that needed special attention.”

D. Brehmer, MD
 Göttingen (Germany)



Puncture sites for the application of radiofrequency energy in the **soft palate**



Dissection of surplus uvula tissue and incision lines for the triangular excision of the posterior palatal pillars.
 (With ARROWtip™ monopolar microdissection electrode, REF: 36 03 42)

CURIS® Basic set/Accessories

CURIS® Basic set

87 00 10 – CURIS® basic set with single-use patient plates

Anzahl	REF	Beschreibung
1	36 01 00-01	CURIS® 4 MHz radiofrequency generator (incl. mains cord, user's manual and test protocol)
1	36 01 10	Foot switch two pedals for CURIS® (cut & coag), cable length: 4 m
1	37 01 54L	Bipolar cable for CURIS®, length: 3 m
1	36 07 04	Monopolar handpiece (pencil) cut & coag, shaft 2.4 mm, cable length: 3 m
1	36 02 38	Cable for single-use patient plates, length: 3 m
1 (x50)	36 02 22	Safety patient plates, single-use, packing 5 x 10 pcs. (not shown)



36 09 00
Fuego trolley

Fuego Trolley

The trolley has a solid design and guarantees that the CURIS® 4 MHz radiofrequency generator will not shift. It also comes with a hook to mount the foot switch.

Two storage baskets for accessories and documentation.



99 01 10
CURIS® trolley case

Trolley Case for CURIS® 4 MHz radiofrequency generator

The CURIS® trolley case is ideally suited to preserve your radiofrequency generator from damage.

Disclaimer:

The information presented herein has been carefully researched and compiled with the help of specialist physicians. They are not meant to serve as a detailed treatment guide. They do not replace the user instructions for the medical devices used. Sutter accepts no liability for the treatment results beyond the mandatory legal regulations.

Products shown in this catalog are available in the EU. Availability in other markets may vary.

CURIS® – Technical data

RF output max.	performance	operating frequency		
monopolar				
CUT 1 (unmodulated)	100 W ± 20 % 600 Ω	4.0 MHz	Modulation frequency	33 kHz
CUT 2 (modulated)	80 W ± 20 % 600 Ω	4.0 MHz	Mains supply	100-240 V; 50/60 Hz
CONTACT (Coag)	80 W ± 20 % 400 Ω	4.0 MHz	Measurements W x H x D	320 mm x 170 mm x 385 mm
SOFTSPRAY (Coag)	60 W ± 20 % 600 Ω	4.0 MHz	Weight	approx. 5.0 kg
bipolar			Mode of operation	Intermittent INT 10 s / 30 s equals 25 % ED
BICUT 1	80 W ± 20 % 300 Ω	4.0 MHz	Standards	DIN EN 60601-1; DIN EN 60601-2-2
BICUT 2	80 W ± 20 % 300 Ω	4.0 MHz	Safety class	I
EXCISE (Cut)	80 W ± 20 % 300 Ω	4.0 MHz	EMC (Interference suppr.)	EN 60601-1-2
MACRO (Coag)	80 W ± 20 % 50 Ω	4.0 MHz	Type	CF (cardiac floating), defibrillator-proof
PRECISE (Coag)	50 W ± 20 % 50 Ω	4.0 MHz	German MPG class.	II b
RaVoR™	40 W ± 20 % 50 Ω	4.0 MHz	Quality assurance	EN ISO 13485



SUTTER MEDIZINTECHNIK GMBH

TULLASTRASSE 87 · 79108 FREIBURG/GERMANY · TEL. +49(0)761-51551-0 · FAX +49(0)761-51551-30

WWW.SUTTER-MED.COM · INFO@SUTTER-MED.DE