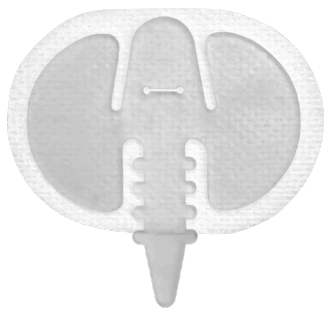
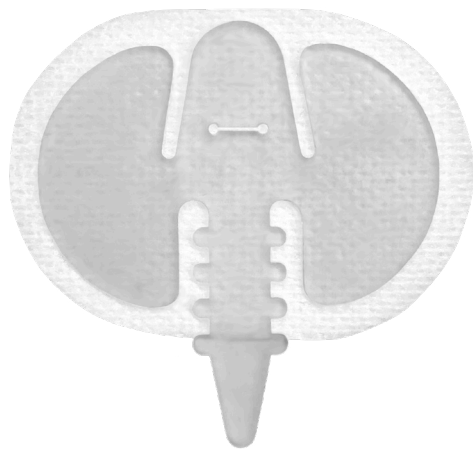


CINCH[®]

Tube Securement Device



Medium CINCH[®]
4F to 17F



Large CINCH[®]
9F to 30F

Patient Comfort First

The low profile and flexible design allows for comfort and mobility.

Safe + Secure

Anchors medical tubes while relieving stress and strain at insertion points.

Hypoallergenic Adhesive

Provides gentle yet secure attachment.

Easy to Use

Simply clean the skin, apply the CINCH[®], and secure the tube!

NEW! The CINCH[®] Family Now Includes Two Sizes!



Innovating. Educating. Changing Lives.™

CINCH®

From 4F to 30F, the CINCH® Has You Covered!

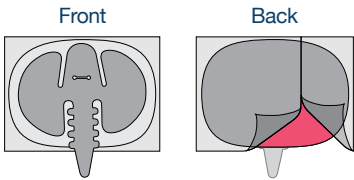
Versatile
Medium CINCH® secures tubes 4F to 17F,
Large CINCH® secures tubes 9F to 30F.

Comfortable
Soft, low-profile, flexible.

Breathable Backing
In two convenient sizes,
Medium (3 cm x 4 cm) and
Large (4 cm x 6 cm).

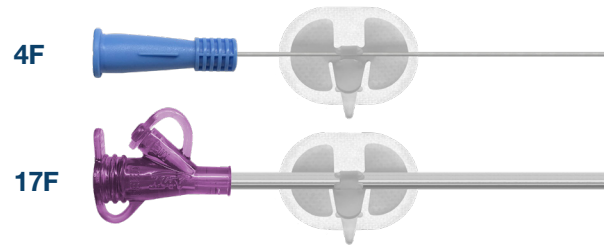
Hypoallergenic
Gentle adhesive for sensitive skin.

Reusable
Elastomer strap can be
repeatedly opened and closed.

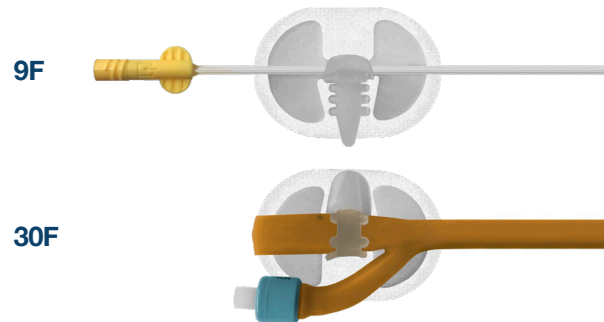


The CINCH® comes fully assembled with an easy-peel split backing.

Medium CINCH®



Large CINCH®



CINCH®

Description	Tube Securement Range	Box Qty	Order Number
Medium CINCH®	4F to 17F	10	CINCH417M-10
		50	CINCH417M-50
Large CINCH®	9F to 30F	10	CINCH930L-10
		50	CINCH930L-50

For a complete list of products visit us at www.AppliedMedical.net
800 869 7382 | CS@AppliedMedical.net | ICS@AppliedMedical.net



CINCH® Tube Securement Device



Applied Medical Technology, Inc.
8006 Katherine Boulevard
Brecksville, OH 44141
www.AppliedMedical.net
An ISO 13485 Registered Company
Made In USA



© 2021 Applied Medical Technology, Inc. C-4733-A

Patents: <http://www.AppliedMedical.net/Patents/> | Trademarks: <http://www.AppliedMedical.net/Trademarks/>

CAUTION: If redness or irritation occurs, stop use and consult a healthcare professional. Do not over tighten.

Images not to scale. This document is not a substitute for the DFU (Directions for Use).